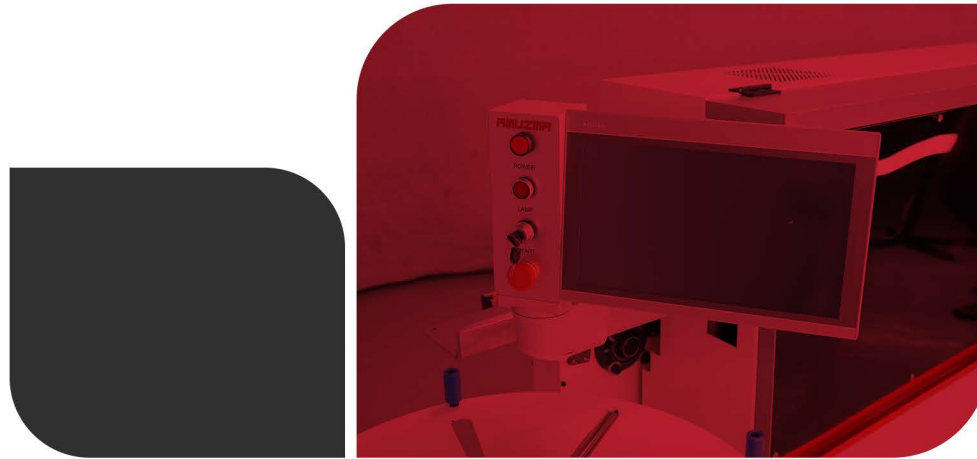


 Elite E5

**AMUZMA**<sup>®</sup>

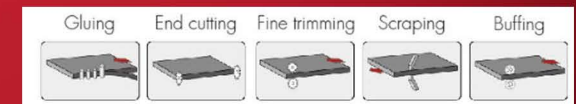


**YOUR VISION,  
OUR MACHINES**



# Edge Banding

## Elite E5



The Amuzma E5 is a reliable and efficient edge banding machine designed for precision, speed, and ease of use. Perfect for small to medium-sized workshops, this machine delivers consistent, high-quality edge finishes on MDF, plywood, particleboard, and similar panel materials.

Built with a compact footprint and equipped with essential features for clean, tight bonding, the E5 offers excellent value for workshops looking to improve productivity and finish quality without investing in a large, industrial unit.

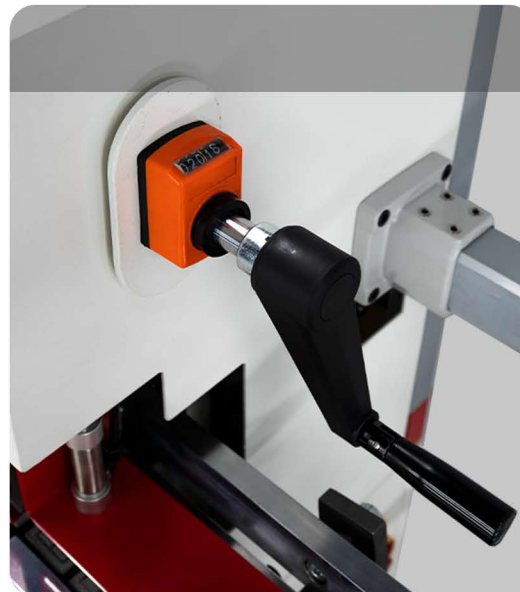
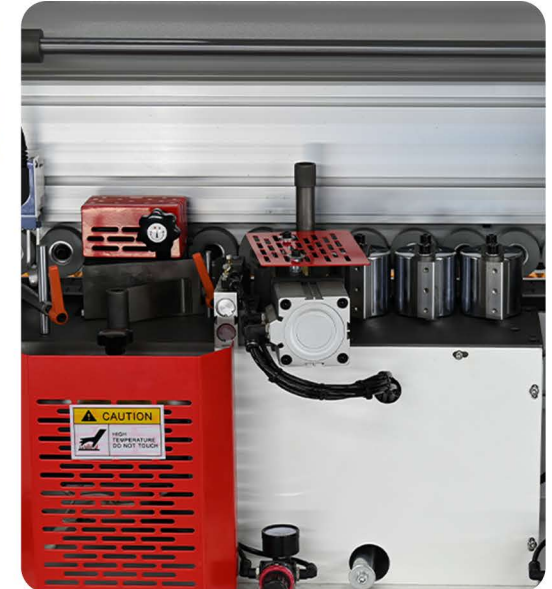
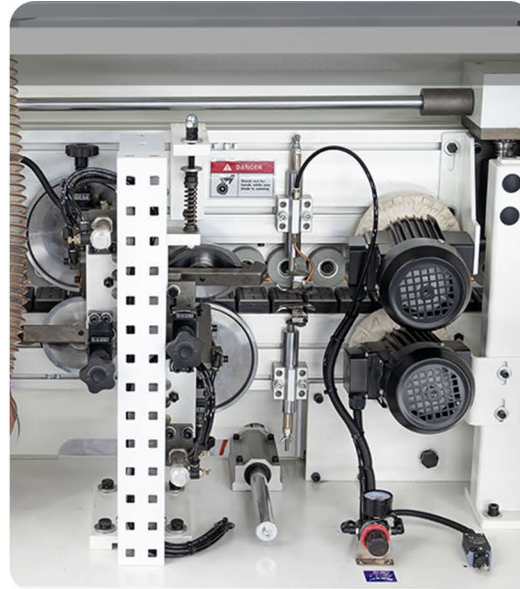
### Specification

Thickness of edge-banding belt	0.4-3 mm
Height of Edge-banding tape	12-45 mm
Workpiece thickness	10-45 mm
Feeding speed	11m/rnin
Air pressure	0.6-0.8 Mpa
Gross power	6.5 kVV
Machine outline size	mm
Packing size	2900x6sox1280 mm
Weight	800 Kg

### Advantage

Different from Other compact edge banding machines, all functional modules Of ECO F series are transplanted and appropriately modified from the industrial-grade edge banding machines, while having the same high accuracy and stability as industrial edge banding machines, the maximum strength and processing efficiency of the equipment are retained.

Eco F series saves space and has good edge banding effect, It is very suitable for small furniture factories, decoration teams, and wood workshops, also a good helper for small batch production in large furniture factories




Follow us  
@amuzmamachinery



## Contact us:

For more info:

 +971 50 857 6840

 [www.amuzmamachinery.com](http://www.amuzmamachinery.com)  
[Info@amuzmamachinery.com](mailto:Info@amuzmamachinery.com)

 **Head Office:**  
Ras Al Khor Industrial Area 2,  
Dubai - United Arab Emirates



Whatsapp



Website